



**san
marco**

SISTEMI VERNICIANTI PER L'EDILIZIA

LAGUNA 3.0

UNIMARC SMALTO MURALE

COMBAT 6000

PAINTOP ANTIALGA

UNIMARC IMPREGNANTE LEGNO

SBIANCANTE PER LEGNO

MARMO D'AUTORE

ANTICA CALCE ELITE

FORMA

ROXIDAN

CADORO - CADORO VELVET - MARCOPOLLO LUXURY

BIANCHI E ORI

2016



UNIMARC SMALTO MURALE

WATER-BASED WALL PAINTS



LAGUNA 3.0



WALL COATINGS



PAINTOP ANTIALGA



ANTI-MOLD PAINT

COMBAT 6000





**UNIMARC
IMPREGNANTE LEGNO
SBIANCANTE PER LEGNO**

WOOD RANGE

DECORATIVE FINISHES

MARMO D'AUTORE
ANTICA CALCE ELITE
FORMA
ROXIDAN
CADORO - CADORO VELVET
MARCOPOLO LUXURY
BIANCHI E ORI



LAGUNA 3.0

Odorless matt washable water-based wall paint for interiors professional application.

The response to the most contemporary needs for painting interiors.

Water-based wall paint for indoor use, based on acrylic binders in water dispersion, **formulated with next-generation technologies able to obtain a pleasant matt finish**. Specially formulated for professional use, high smoothing power, anti-spurt, easy retouching, excellent flow and brushing.

LAGUNA 3.0 THE EVOLUTION*:

- Odorless
- APEO-free, low V.O.C.
- Higher wet-scrub resistance (class 3 UNI EN 13300)
- Higher whiteness*
- More matt appearance*

* Details in comparison with Laguna



Available:

0019	white	14 - 4 - 0,75 L
0064	deep	14 - 3,75 - 0,7 L
0061	medium	14 - 4 - 0,75 L

TECHNICAL DETAILS:

- Tools: brush, roller, spray gun and airless
- Application: 2 coats
- Indicative spreading rate: 8-10 sqm/l per coat
- Drying times (at 25°C and 65% R.H.):
 - to touch 1 hour, to recoat after 3 hours
- Wet-scrub resistance per UNI 10560: > 2000 cycles resistant

CLASSIFICATION UNI EN 13300:

- Wet-scrub resistance per ISO 11998: class 3
- Gloss per EN ISO 2813: <5, very matt
- Coverage per ISO 6504-3:
 - class 1 with a spreading rate of 7 smq/l

CERTIFICATIONS:

- VOC-FORMALDEHIDE determination

✓ Environmental data sheet



Class A+ (very low emissions)
for what concerns the emission
of volatile substances in the indoor Air.



unimarc SMALTO MURALE

Wall enamel specific for big indoor and outdoor **surfaces such as hospitals, schools, kindergarten, medical laboratories** and any setting with high sanitation standards through frequent cleaning. Based on acrylic resin it is indicated **for foodstuffs** environments, industrial ones, hotels, restaurants, bakeries.

NEW FORMULATION

ADVANTAGES

50% faster in drying

20% whiter

Formaldehyde free

Low VOC

In compliance with the HACCP system



works are realized in half time



aesthetics and powered uniformity



respecting sensitive/allergic people



Safeguard of health and environment



suitable for settings subject to foodstuff treatments



FASTER IN DRYING



MORE WHITE



FORMALDEHIDE FREE



HACCP SYSTEM



TECHNICAL DETAILS:

- Application: 2 coats
- Tools: brush, roller, and spray gun and airless
- Indicative spreading rate: 9-10 sqm/l per coat
- Drying times (aa 25°C and 65% di R.H.):
to touch 30 min, to recoat after 2 hours
- Wet-scrub resistance per UNI 10560:
>10000 cycle, excellent

CLASSIFICATION PER UNI EN 13300:

- Wet-scrub resistance per ISO 11998: class 1
- Gloss per EN ISO 2813: mat/glossy/satin
- Coverage ISO 6504-3: class 2 with a spreading rate of 7smq/l

CERTIFICATION:

- In compliance with HACCP according to the standards of Reg. CE 852/2004



Environmental data sheet

Available in the versions:

UNIMARC SMALTO MURALE LUCIDO

UNIMARC SMALTO MURALE SEMILUCIDO

UNIMARC SMALTO MURALE OPACO

Available in the pack sizes:

10 - 2,5 - 1 L



Class A+ (very low emissions)

for what concerns the emission
of volatile substances in the indoor Air.



MARMO D'AUTORE

Mineral decorative coating for exteriors and interiors



Art and Tradition: the charm of old stone marble.

Refined finish with smooth effect, white and characterized by the presence of fine powders of colored marble. It enriches the spaces with brightness and three-dimensionality.

MARMO D'AUTORE has excellent breathability and is particularly suitable for restoration work, even of particular historical and artistic interest.



Available in the
ready colors:
000 BOTTICINO
001 RUBINO
002 SMERALDO

Pack sizes:
25 – 1 kg

TECHNICAL DETAILS:

- Tools: plastic or steel trowel, sponge .
- Application: at least 2 coats
- Indicative spreading rate: 1,2-1,5 Kg/sqm at 2 coats
- Permeability to liquid water per UNI EN 1062-3: medium, $w=0,20 \text{ kg/sqm}^{\wedge}0,5$
- Permeability to water vapor per UNI EN ISO 7783-2: high, $S_d=0,08$ for thickness of 0,7 mm

CERTIFICATIONS:

- VOC-FORMALDEHYDE determination
- Class of reaction to fire ISO 1716: A1

✓ Environmental data sheet



Class A+ (very low emissions)
for what concerns the emission
of volatile substances in the indoor Air.

ANTICA CALCE ELITE

Mineral based paint of the italian tradition
for exteriors-interiors

DECORATIVE FINISHES NEWS



From the past the charm of the brushed lime.

It is a mineral lime based finish reproducing the typical effect of the old decorations, smooth to the touch, matt and rich of soft shadows. Highly breathable, it adheres without flaking, ideal for the renovation of old buildings and to decorate any room in the style of the ancient lime workings of the Italian tradition.



For the selection of colors, see the color card
MINERAL FINISHES.

Available in the pack
sizes: white / deep
15 - 5 - 1 L

TECHNICAL DETAILS:

- Tools: brush, roller, spray gun
- Application: 2 coats
- Indicative spreading rate: 8-10 sqm/l per coat
- Classification PER UNI EN 1062-1:
 - Gloss per EN ISO 2813: classe G3
 - Dry film thickness per ISO 3233: class E2
 - Granulometry per EN ISO 1524: class S1
 - Water vapor transmission degree per UNI EN ISO 7783-2: class V1
 - Permeability to water per UNI EN 1062-3: class W2
 - Resistance to cracking per UNI EN 1062-7*: class A0
 - Permeability to CO₂ per UNI EN 1062-6: class C0

✓ Environmental data sheet



Class A+ (very low emissions)
for what concerns the emission
of volatile substances in the indoor Air.

FORMA

Decorative putty base coat for interior.



Create the suitable undercoat for every single aesthetic appearance.

Base coat for the realization of textured undercoats with varying thickness, to be decorated with many decorative finishes: ROXIDAN, CADORO, CADORO VELVET, ABC RIFLESSI, MARCOPOLO, MARCOPOLO 'SABLE', MARCOPOLO LUXURY, VELATURE, PERLACEO, ABC RIFLESSI, DECORI CLASSICI.

TECHNICAL DETAILS:

- Tools: stainless steel trowel, steel spatula, mat trowel, comb spatula.
- Application: coats: 1-2 coats
- Indicative spreading rate: 0,8-1,8 Kg/sqm

Thanks to the extreme ease of use and versatility in the reproduction of colors (to be tinted by tinting machine) it allows to create multiple aesthetic results, depending on the application technique used.



Available white in
the pack sizes:
25 – 5 kg

ROXIDAN

Decorative finish with oxidized effect.



All oxidized effects for the contemporary and refined design.

It realizes a metallic decorative wax effect that reproduces the typical oxidized appearance of supports aged by atmospheric agents.

Easy to be applied it allows results of great refinement and modernity.

TECHNICAL DETAILS:

- Tools: stainless steel trowel
- Indicative spreading rate:
8-10 sqm/l per coat
- 2 coats
- ready for use

With the new ready color Platinum it will be possible to realize the typical effects of rust and many other new decorative effects linked to oxidation. Platinum can be tinted by tinting system.



*Available Pearl
and Platinum in
the pack sizes:
4 – 1 L*

COMBAT 6000

ANTI-MOULD PAINT

Anti-mould sanitizing and uniforming fast drying matt washable water-based wall paint for indoor use

STOP
mould in
3 STEPS



For home with mould issues of High humidity entities. capable of maintaining the aesthetic appearance of the original paint preserving it from the formation of mould.

New formulation technology based of modified polymers enabling a fast drying and a prompt use of the house setting. Water based wall paint with a high coverage power and properties of masking the imperfections. Easy to apply, suitable for matt and homogeneous finishes. Low content of volatile organic compounds.

TECHNICAL DETAILS:

- Product is applied in at least 2 coats
- Indicative spreading rate: 9-12 m²/l per coat
- Drying times (at 25°C and 65% R.H.):
 - to touch 30 minutes, to recoat after 2 hours
- Wet-scrub resistance per UNI 10560: >3000 cycles, resistant
- Classificazione UNI EN 13300:
- Wet-scrub resistance per ISO 11998: class 3
- Gloss per EN ISO 2813: <5, very matt
- Coverage per ISO 6504-3: class 2 with a spreading rate of 7 smq/l

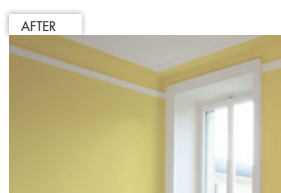
CERTIFICATIONS:

- Résistance aux moisissures EN 15457
- Détermination COV-FORMALDHEYDE



**LOW
VOC**

Available in white
the pack sizes:
14 - 4 L



Anti-mold anti-algae quartz washable water-based wall paint for outdoor use



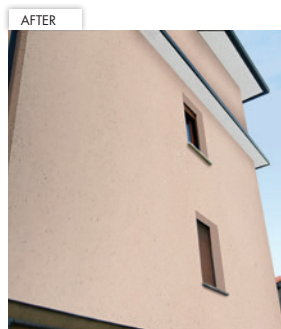
Washable wall paint based of acrylic binder in water emulsion, for outdoor use, of general use. Good filling power and properties of masking the imperfections of the surface. High resistance to weathering and alkaline support surfaces. Matt aesthetic appearance.

TECHNICAL DETAILS:

- Alkali resistance per UNI 10795: resistant
- Scrub resistance classification per UNI 10560: >5000 cycles, very high
- Resistant to mold and algae according to UNI EN 15457 and UNI EN 15458



Available
White, deep,
transparent pack
sizes: 15 - 4 l



unimarc IMPREGNANTE LEGNO

Impregnant odorless water soluble finish for exteriors and interiors.



Suitable for the decoration and protection of interior and exterior wooden artefacts. Based on water-based acrylic/alkyd resins of new generation, with high penetration and adhesion. High breathability, it revitalizes and enhances the shades leaving visible the original grain of the wood. Excellent elasticity, it follows the natural structural variations of wood.

NEW FORMULATION

ADVANTAGES

High dry residual 23%

Low viscosity

New Technology

New Controlled Erosion Technology

- high protective power
- easy wood penetration
- it doesn't peel – Easy maintenance

TECHNICAL DETAILS:

- Application: 2 coats
- Tools: brush, spray gun
- Indicative spreading rate: 8-10 sqm/l per coat

✓ Environmental data sheet



Available in the
pack sizes:
10 - 2,5 - 1 L



**EASY
MAINTENANCE**



**IT DOESN'T
PEEL**



**PROTECTIVE
HIGH DRY RESIDUAL**

SBIANCANTE PER LEGNO

Water-based gel with whitening action.



Special treatment to renote wood.

Water-based gel with whitening action.

It restores the original color of the wood degraded by exterior exposure.

Water-based gel formulation, it doesn't strain, ready to use, ensures quick and penetrating action, eliminates the gray, stains and dirt without altering the structure of the wood, without discoloring the wood species.

TECHNICAL DETAILS:

- Tools: brush
- 1 coat
- ready for use
- Indicative spreading rate:
4-6 sqm/l per coat

Available:
Colorless pack sizes 1 L



New ready colors

White and Pure Gold

To follow the contemporary fashion trends, new items come **with a whiter white appearance and a golden color which is even brighter** compared with the former ones.



CADORO



**CADORO
VELVET**



**MARCOPOLO
LUXURY**

They are ready to use colors formulated to be applied as they are in order not to lose their exceptional brilliance. To obtain the colors just use the bases for tinting machine.



GET MORE INFO



www.san-marco.com
info@san-marco.it

facebook.com/sanmarcospa twitter.com/sanmarcospa pinterest.com/sanmarcospa youtube.com/marketingsanmarco

**san
marco**
SISTEMI VERNICIANTI PER L'EDILIZIA

Colorificio San Marco SpA
Via Alta 10 - 30020 Marcon (VE) - Italy
Tel +39 041 4569322
Fax +39 041 5950153

**made
in italy**

AZIENDA CON SISTEMA
DI GESTIONE QUALITÀ
CERTIFICATO DA DNV GL
= ISO 9001 =